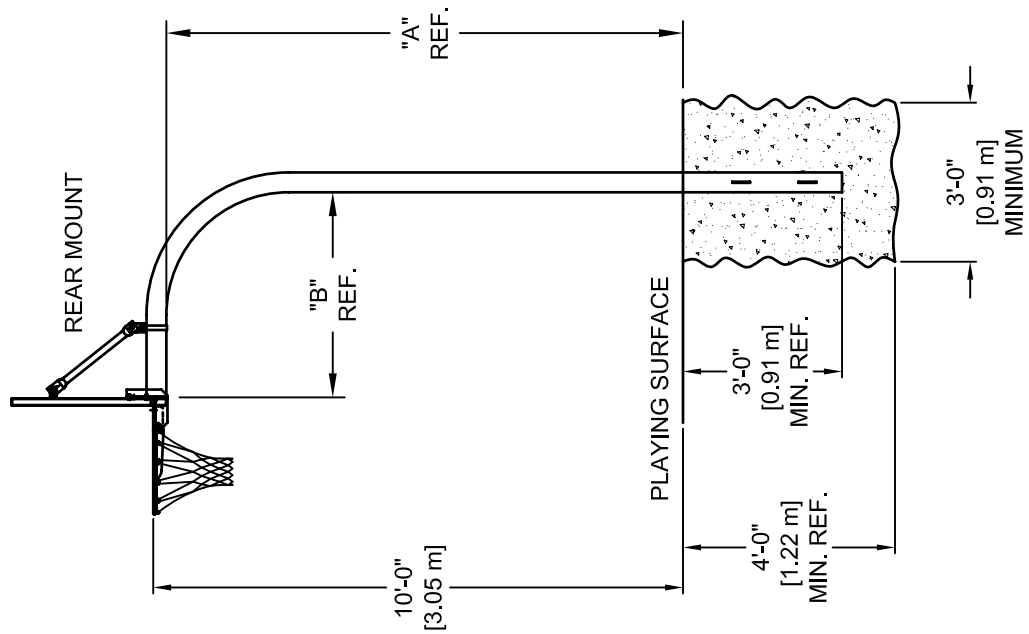
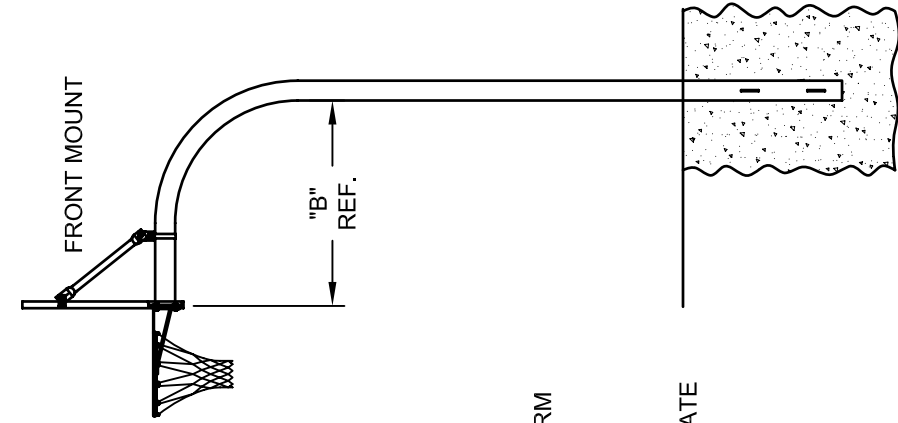
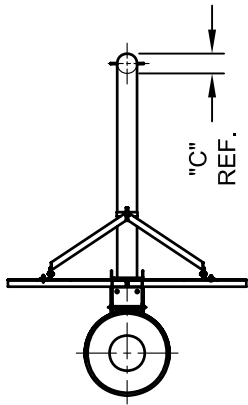


FRONT MOUNT GOAL			
MODEL	DIM. "A" Ft.-In. (Meters)	DIM. "B" In. (Meters)	DIA. "C" In. (MM)
GN 60F	9'-6.5" (2.91M)	70.5" (1.79M)	5.56" (141mm)

REAR MOUNT GOAL			
MODEL	DIM. "A" Ft.-In. (Meters)	DIM. "B" In. (Meters)	DIA. "C" In. (MM)
GN 60R	9'-8.5" (2.96M)	70.5" (1.79M)	5.56" (141mm)



NOTE:
DIMENSION "A" IS FROM THE
UNDERSIDE OF THE POST ARM
TO THE PLAYING SURFACE.

NOTE:
DIMENSION "B" IS FROM THE
FACE OF THE MOUNTING PLATE
TO THE EDGE OF THE POST.

REVISION		
REV.	DATE	BY
-	-	-




Gared Holdings, LLC
9200 E. 146th St. Noblesville, IN 46060

THIS DOCUMENT CONTAINS TRADE SECRET AND OTHER MATERIALS WHICH ARE PROTECTED BY CONFIDENTIALITY NOTICE AND AGREEMENT AND BY COPYRIGHT. ANY USE OR COPYING OF THIS DOCUMENT EXCEPT AS AUTHORIZED BY GARED HOLDINGS, LLC IS STRICTLY PROHIBITED.

BRACED GOOSENECK SYSTEM

DRAWN	CONNERLEY	DATE	06/03/08	MATERIAL	N/A
APPROVED	JJC	DATE	06/03/08	FINISH	N/A
FILE LOC.	Q:\Final Release\Specifications			DWG. NO.	GN60
SIZE	SCALE	SHT. NO.	PART NO.	REV	
A	NONE	1 OF 1	GN60	-	



MODEL GN60

GOOSENECK OUTDOOR BASKETBALL SYSTEM

GN60

This unit uses a gooseneck design to extend the backboard 72" out from the post. The post shall be 5 9/16" O.D. schedule 40 (0.26") wall galvanized pipe. The mounting plate is used as a direct goal attachment for the backboard. Two braces extending from the upper mounting points of the backboard to the gooseneck extension provide added rigidity to the system. The system can be used with all outdoor front and rear mounts boards and goals.

Post shall extend into the concrete footing at least 36". Concrete footing shall be 36" minimum in diameter and 48" minimum deep.

Concrete for installation not included.

Subject to design change and current manufacturing practices.
Revised April 4, 2008 ©2008 Gared Holdings, LLC